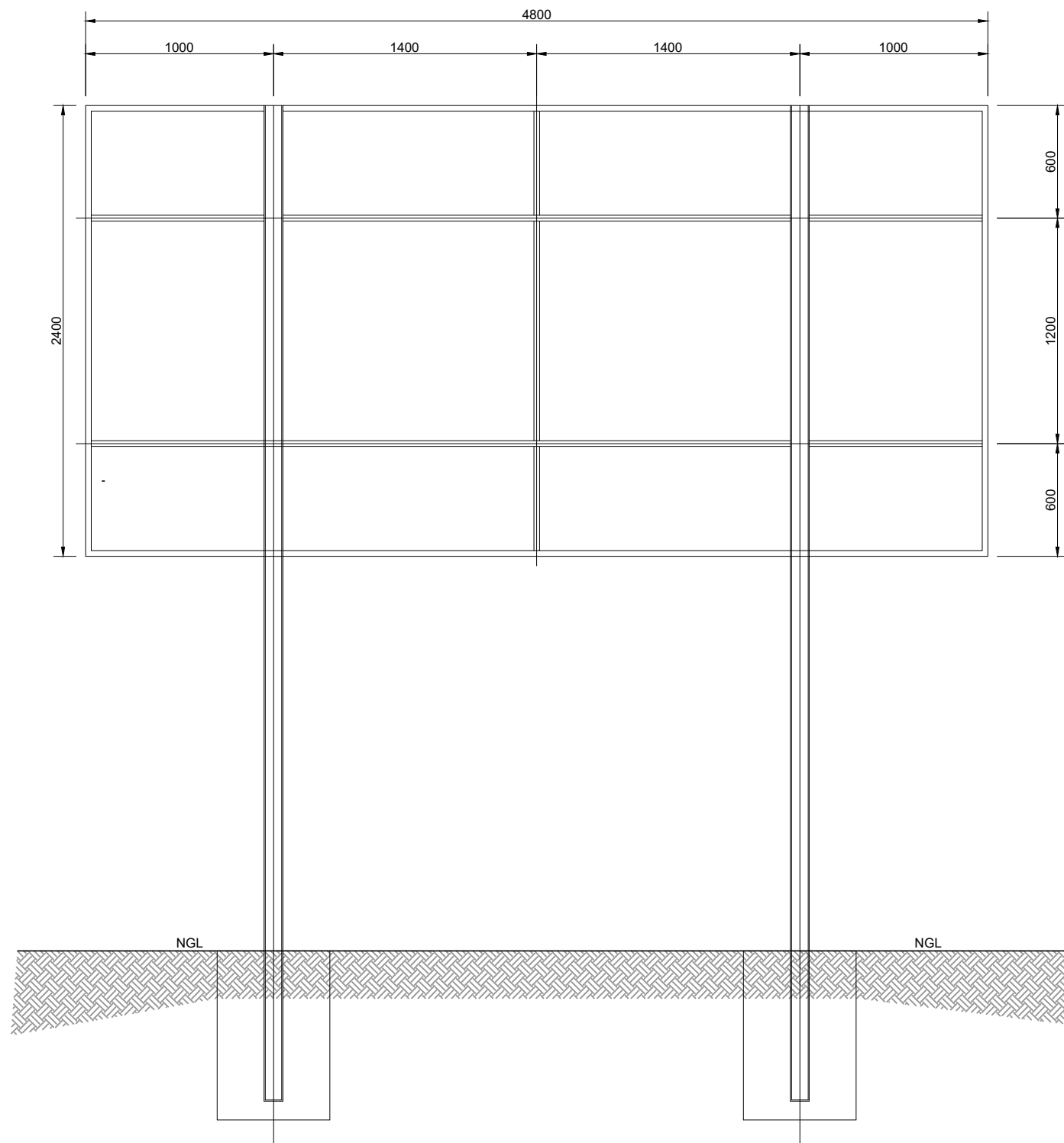
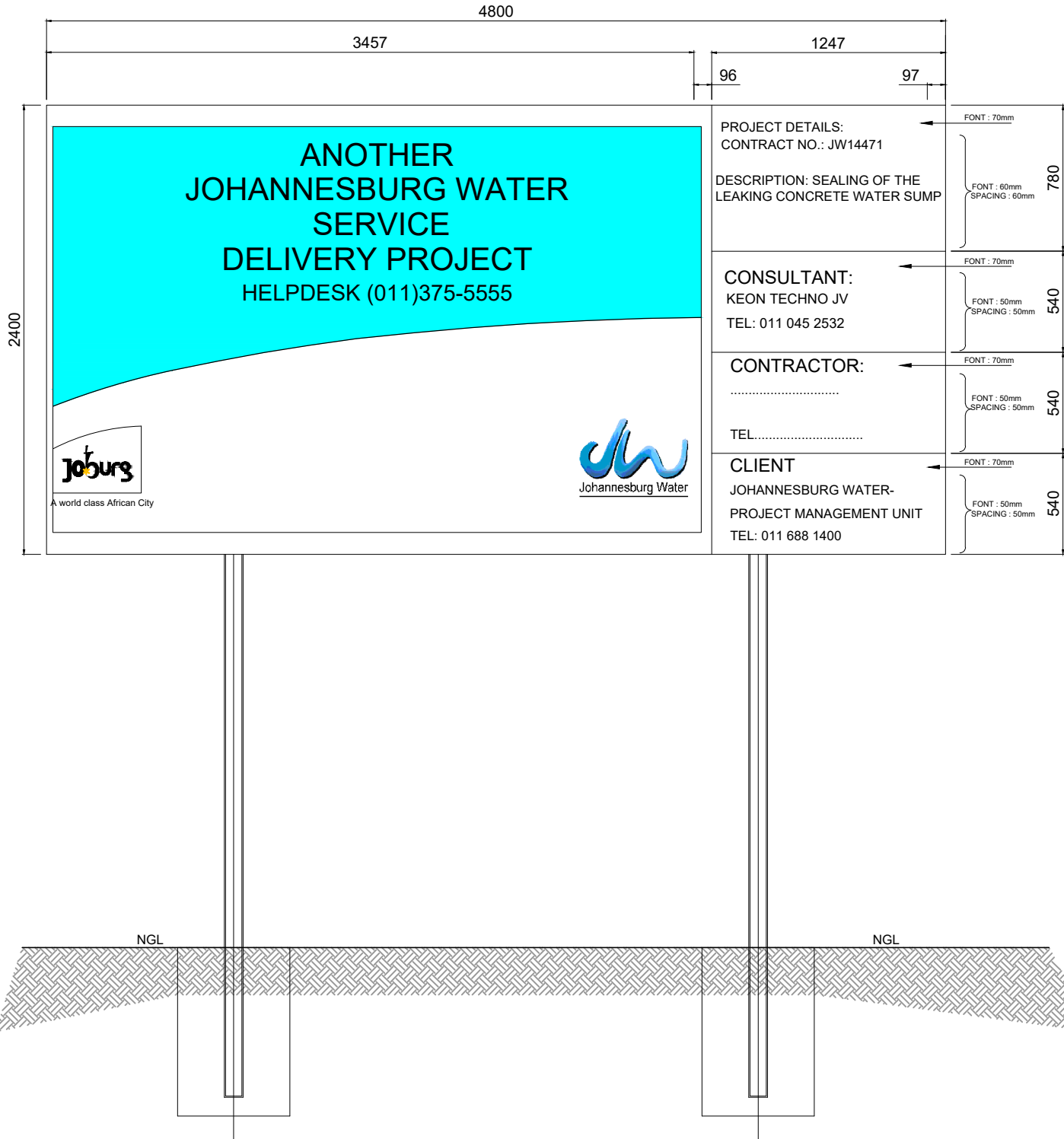


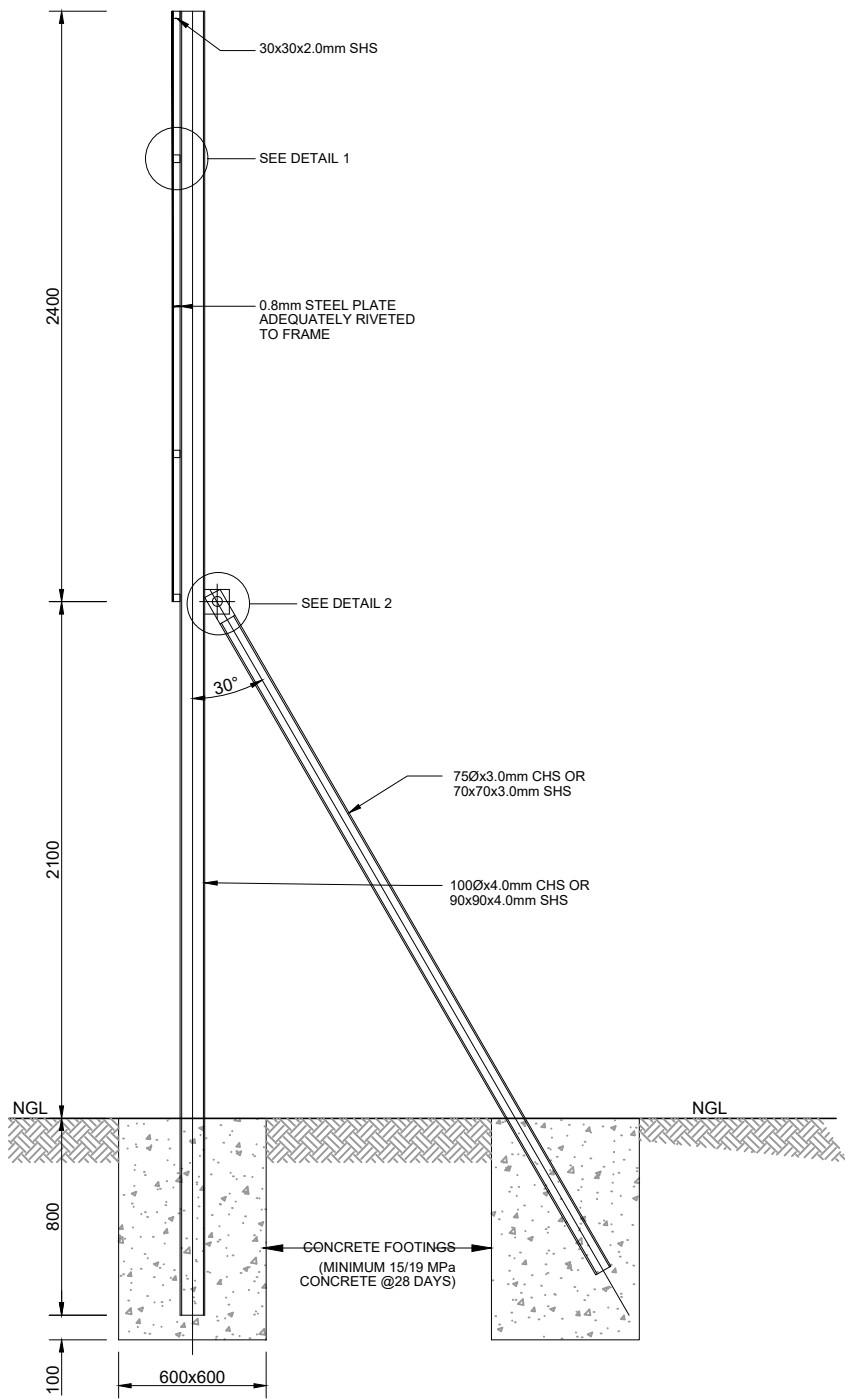
CONTRACT NO.: JW14468



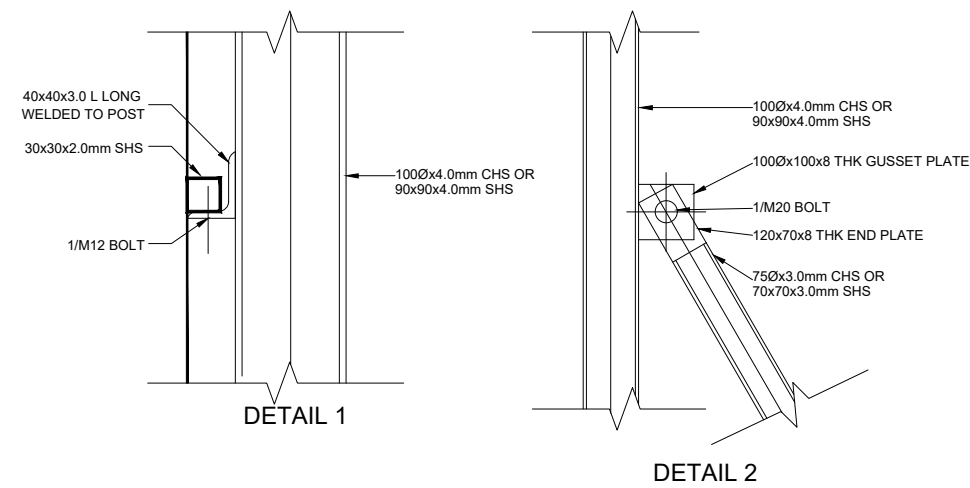
BACK ELEVATION



FRONT ELEVATION



TYPICAL SECTION



NOTE:
ALL WELDS TO BE 6mm FILLET
WELD ALL AROUND UNLESS
OTHERWISE SPECIFIED

Engineer:
KEON
CONSULTING ENGINEERS
TECHNO
DESIGNS
Civil Structural & Transport Engineers

34 Dang Street Glen Austin
Midrand
TELEPHONE (011) 045 2532
CELL (072) 301 1811
EMAIL engineer@technodesigns.co.za
WEBSITE www.technodesigns.co.za

Client:
JOHANNESBURG WATER
Turbine Hall,
65 Morni Ploca Street,
Newtown, Johannesburg

TECHNO DESIGNS
ENGINEERING
34 Dang Street Glen Austin
Midrand
TELEPHONE (011) 045 2532
CELL (072) 301 1811
EMAIL engineer@technodesigns.co.za
WEBSITE www.technodesigns.co.za

KEON CONSULTING
ENGINEERS
5th Avenue Office Park,
4th 5th Avenue Newton
Port Elizabeth
TELEPHONE: 07 413830189
WEBSITE www.keon.co.za

Client:
JOHANNESBURG WATER
Turbine Hall,
65 Morni Ploca Street,
Newtown, Johannesburg

THESE NOTES SERVE AS AN ADDENDUM TO THE SPECIFICATION IN THE BILL OF MATERIALS (BOM). IN THOSE CASES WHERE THE BOM SPECIFICATIONS DIFFER FROM THESE NOTES, THESE NOTES SHALL TAKE PRECEDENCE ON ORIGINAL.

Engineer:
T. Chikwata Pr Eng (20140009)
Drawn By:
M. Mulumba
Designed By:
T. Mapumo
Checked By:
T. Chikwata
Signature:
Date:
November 2024

CONCRETE NOTES:

1.0 SETTING OUT AND GENERAL
1.1 THIS DRAWING SHOULD BE READ IN CONJUNCTION WITH ARCHITECT'S DRAWINGS.
1.2 ALL DIMENSIONS AND HEIGHTS ARE TO BE CHECKED ON SITE BEFORE WORK IS PUT IN HAND.
1.3 REPORT DISCREPANCIES TO ARCHITECT OR ENGINEER.
1.4 THIS DRAWING MUST NOT BE USED TO SCALE OFF. USE ONLY WRITTEN DIMENSIONS. CONTACT THE ENGINEER OR ARCHITECT WHERE CLARITY IS SOUGHT.
1.5 FOR SETTING OUT DATA, SETTING OUT POINTS AND DATUM LEVELS REFER TO SURVEY INFORMATION AND ARCHITECT'S DRAWINGS.
1.6 STRUCTURAL WORK IS TO BE CARRIED OUT IN ACCORDANCE WITH THE PROJECT SPECIFICATION AND THE RELEVANT S.A.N.S. SPECIFICATIONS. ALL CONCRETE WORK IS TO BE DONE IN ACCORDANCE WITH S.A.N.S. 1200G AND EARTHWORKS IN ACCORDANCE WITH S.A.N.S. 1200D.
1.8 CONSULT RELEVANT ARCHITECT'S, MECHANICAL, ELECTRICAL & PLUMBING DRAWINGS AND DETAILS AS RELEVANT FOR DRAINAGE, STORMWATER OUTLETS, RWOPS AND HOLES AND SLEEVES FOR THESE SERVICES. NO HOLES ARE TO BE CORED WITHOUT ENGINEERS WRITTEN APPROVAL.
2.0 FOUNDATIONS
2.1 ALL FOUNDATION EXCAVATIONS TO BE INSPECTED AND APPROVED IN WRITING BY THE ENGINEER BEFORE CONCRETE IS CASTING.

2.2 NO FOUNDATIONS ARE TO BE CAST IN FILL MATERIAL. A 50mm THICK LAYER OF 10MPa / 19mm BLINDING CONCRETE IS TO BE CAST UNDER ALL REINFORCED BASES, REINFORCED STRIP FOOTINGS AND GROUND BEAMS.
2.3 ANY OVER EXCAVATIONS ARE TO BE MADE GOOD WITH 10MPa / 19mm CONCRETE AT THE CONTRACTOR'S EXPENSE.
2.4 BACKFILLING OVER COLUMN BASES SHALL BE DONE WITH AN APPROVED MATERIAL, COMPACTED IN LAYERS IN ACCORDANCE WITH THE PROJECT SPECIFICATIONS.
2.5 ALLOWABLE BEARING PRESSURE UNDER:
CONCRETE BASES = 150kPa
STRIP FOOTINGS = 100kPa
3.0 CONCRETE
3.1 CONCRETE CHARACTERISTIC 28 DAY STRENGTH:
BASES: 25MPa / 19mm
STRIP FOOTINGS: 30MPa / 19mm
SURFACE BEDS: 30MPa / 19mm
SUSPENDED SLABS & BEAMS: 30MPa / 19mm
COLUMNS: 30MPa / 19mm
3.2 CONCRETE MIX DESIGNS FOR ALL GRADES OF CONCRETE TO BE GIVEN TO ENGINEER FOR PERUSAL AND COMMENT. CONCRETE MIX DESIGNS FOR SURFACE BEDS TO HAVE MINIMUM BLEED CHARACTERISTICS.
3.3 ALL CONCRETE TO BE ADEQUATELY CURED BY KEEPING SURFACES CONTINUOUSLY DAMP FOR AT LEAST 5 DAYS AFTER CASTING.

4.0 REINFORCEMENT
4.1 CHARACTERISTIC STRENGTH:
MILD STEEL: 250N/mm²
HIGH YIELD STEEL: 450N/mm²
4.2 ALL REINFORCEMENT TO BE CHECKED AND APPROVED BY ENGINEER BEFORE ANY CONCRETE IS CAST. 48 HOURS WRITTEN NOTICE TO BE GIVEN TO ENGINEER BEFORE TIME OF INSPECTION.
4.3 LAP LENGTH TO REINFORCING TO BE MINIMUM 50 x SMALLER BAR DIAMETER, UNLESS OTHERWISE NOTED.
4.4 MESH REINFORCEMENT REFERENCE 245 TO BE PLACED IN SLAB (TOP) MINIMUM LAPS = 300mm UNLESS OTHERWISE NOTED.
4.5 THE CONTRACTOR MUST TAKE PARTICULAR CARE TO ENSURE THAT THE SPECIFIED COVER TO ALL REINFORCEMENT HAS BEEN ATTAINED THROUGHOUT BEFORE THE ENGINEER IS CALLED TO SITE FOR INSPECTION OF THE REINFORCEMENT.
4.6 COVER TO REINFORCEMENT:
BASES: 50mm
COLUMNS AND WALLS: 50mm
SUSPENDED SLABS: 30mm

4.7 CONTRACTOR IS TO CONDUCT HIS OWN INSPECTION OF REINFORCEMENT BEFORE CALLING THE ENGINEER FOR INSPECTION.
5.0 FORMWORK AND PROPPING
5.1 STRIPPING TIMES FOR:
COLUMN AND WALL: SHUTTERING: 15 DAYS
BEAM SHUTTERING: 7 DAYS IN HOT WEATHER, 12 DAYS IN COLD WEATHER, 4 DAYS IN HOT WEATHER, 7 DAYS IN COLD WEATHER.
5.2 PROPPING TIMES FOR:
SLABS AND BEAMS: 14 DAYS IN HOT WEATHER, 21 DAYS IN COLD WEATHER, 21 DAYS
CANTILEVER SLABS AND BEAMS: (SUBJECT TO CUBE TEST RESULTS BEING SUBMITTED TIMELY TO ENGINEER FOR APPROVAL)
NO DE-PROPPING OF SUSPENDED ELEMENTS UNTIL INSTRUCTED BY ENGINEER.
5.3 CONCRETE FINISHES: UNLESS NOTED OTHERWISE
COLUMNS AND WALLS: OFF SHUTTER
BEAMS AND SLAB SOFFIT: OFF SHUTTER
TOP OF SUSPENDED SLABS: STEEL FLOAT
SURFACE BEDS: POWER FLOAT
5.4 SIDES OF GROUND BEAMS TO BE SHUTTERED.

Refer To Drawing No:

Key Plan:

No Date Details Revisions Chd Appd

Project:
JW14471-SEALING OF THE LEAKING
CONCRETE WATER SUMP

Description:
NOTICE BOARD FRAME DETAILS

Issued For:
TENDER

Size: A1
Scale: As Shown
Sheet No: 1 OF 1
Original Date: November 2024

Project No: JW14471
Drawing No: STRUCT-05
Revision: 0